

# ROTATING CLAMPING



**G I Z E T A  
I M P I A N T I**

**GI-ZETA IMPIANTI S.r.l.**

25030 via Vanzago, 2 PARATICO (BS)  
ITALIA

[uff.commerciale@gizetaimpianti.it](mailto:uff.commerciale@gizetaimpianti.it)

[www.gizetaimpianti.it](http://www.gizetaimpianti.it)

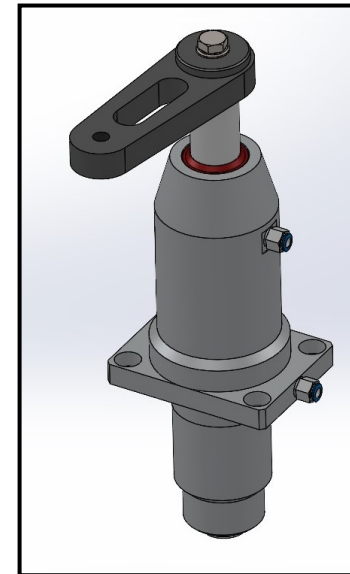
Ph. 035 917975 - Fax 035 917782

COMMERCIAL  
CODE

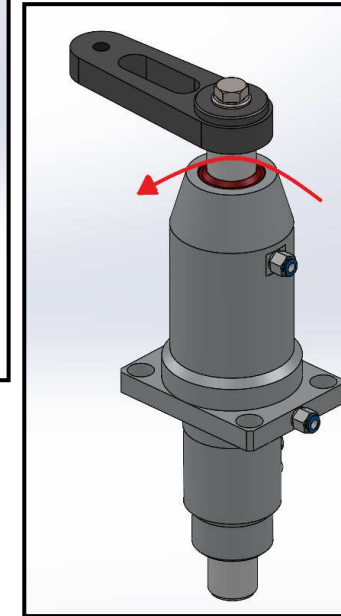
**SM SMEL 3 0006 BB**

## MAIN TECHNICAL FEATURES

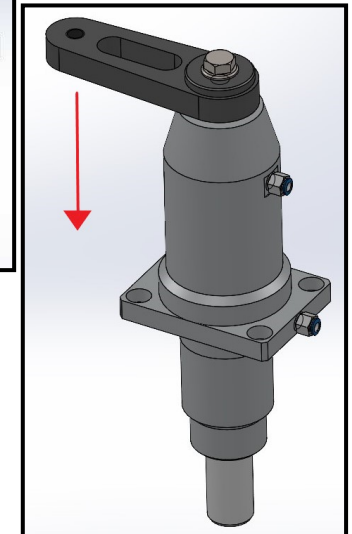
Fluid	[ / ]	Air
Bore	[ mm ]	63
Stroke	[ mm ]	49
Weight	[ kg ]	4
Working position	[ / ]	Any
Rotation angle	[ ° ]	90 (clockwise)
Max. working pressure	[ bar ]	10
Working temperature	[ °C ]	-20...+80
Max. Clamping force (6 bar)	[ N ]	1416
Max. Release force (6 bar)	[ N ]	1352



1 - OPEN



2 - ROTATED

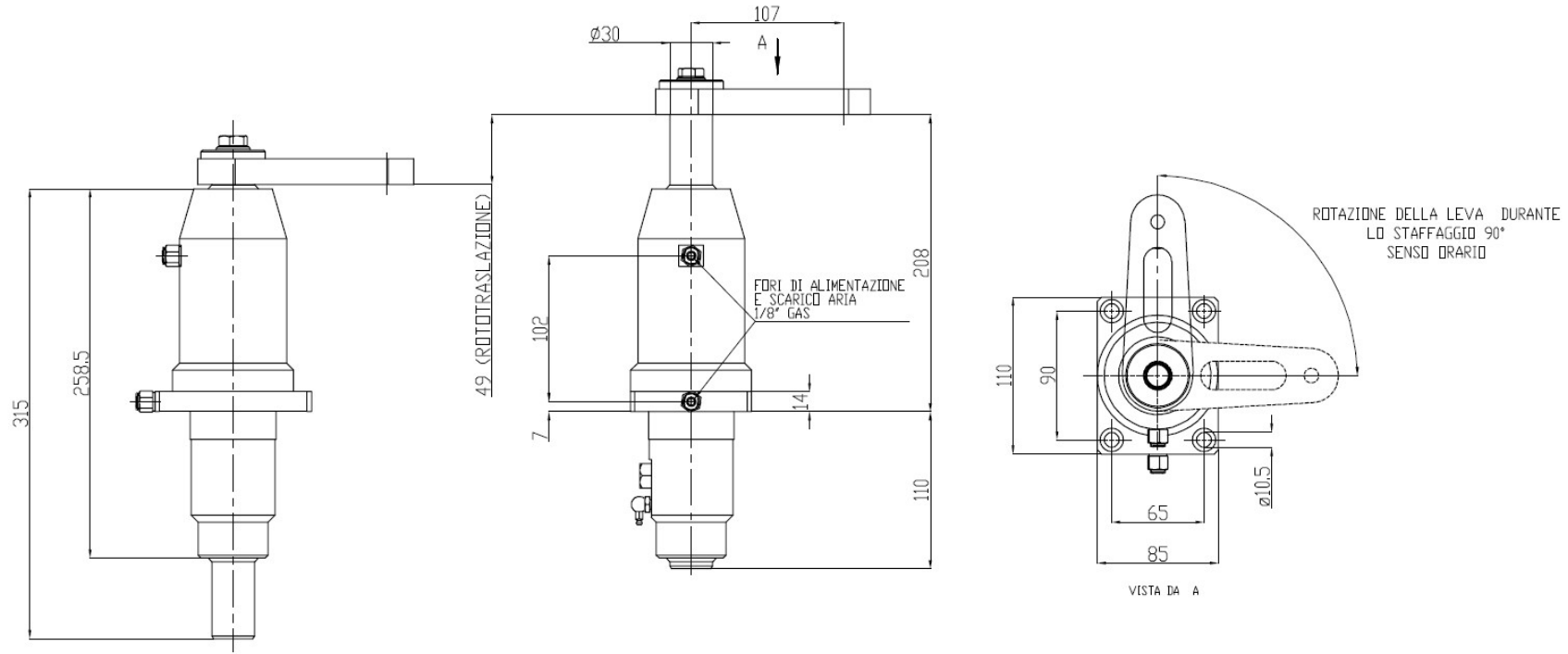


3 - LOCKED



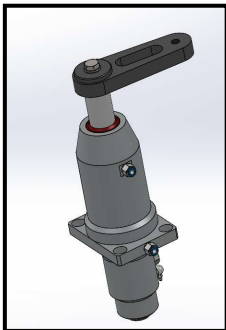
G I Z E T A  
I M P I A N T I

## DIMENSIONS

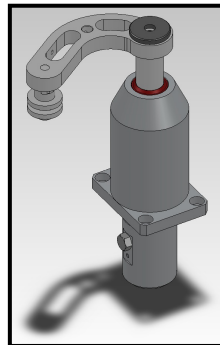


## AVAILABILITY OF CUSTOM CONFIGURATIONS

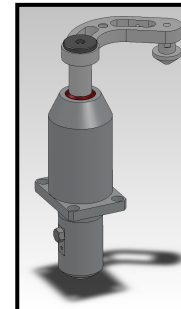
Middle fixing flange solution



Cylindrical solution with custom ferrule



Cylindrical solution, edited ferrule and counterclockwise rotation



\* For further technical information, please contact our Technical Office.